

Snowy District Community Newsletter - # 2

Department Environment Land Water and
Planning - Forest Fire Management Victoria

Who are we and what do we do -

DELWP - The Department of Environment, Land, Water and Planning bring together Victoria's climate change, energy, environment, water, forests, planning and emergency management functions into a single department to maximise connections between the environment, community, industry, and economy.

FFMVic - Forest Fire Management Victoria consists of specialist staff from the Department of Environment, Land, Water and Planning (DELWP), Parks Victoria (PV), Melbourne Water and VicForests.

FFMVic work with the Country Fire Authority (CFA), Fire Rescue Victoria (FRV), and other emergency services and communities across Victoria to deliver the best local approaches to public land management. We are proud to be recognised as a world leader in bushfire risk management. Our core purpose is to protect people, property, and the environment. We do this by managing bushfires and bushfire risk in Victoria's parks, forests, and other public land, and by minimising the impact of fire on our communities, environment, and everything we value most. This management includes – risk-based bushfire management and planning – fire prevention preparedness – fuel management programs (including planned burning) – emergency response and recovery. We also preserve and upgrade our parks and state forests to provide more accessible opportunities to enjoy the outdoors and nature.

The Snowy District has three work centres with bases in Bendoc, Cann River and Orbost. The works programs are spread across the work centres covering over a million hectares of land. (Please refer to the attached map, outlining each work centre area.) Across these work centres 50 to 60 full time staff fill positions with a further 40 Project Fire Fighters employed on a seasonal basis.

Welcome to our second Community Newsletter, sharing information and news about works activities and accomplishments from across the Snowy District footprint.

Bushfire & Storm Recovery works are continuing across the Snowy District.

Bendoc Work Centre

- Clean up and restoration works are still ongoing from rain and storm events that have impacted roads and tracks across the area.
- The pest animal program is continuing to be applied where staff and time availability permits.
- Delegate River Tunnel walking platform has been replaced and the viewing bridge has been re-decked and handrails repaired.
- Recent upgrades of Wilson Hut and the surrounding area included a new roof, chimney, toilet, tables and BBQ and soon additional BBQs will be added.

Picture Below – Delegate River Tunnel walking platform



Snowy District Community Newsletter - # 2

Cann River Work Centre

- Repairs have progressed at the Drummer Rainforest Walk with a new boardwalk (duckboard) and gravel re-sheeting of walking track.
- Repair and patch up works are continuing at Casuarina Walk, (from Betka Rd to Genoa Rd), addressing washouts and drainage issues. Wet weather and conditions have delayed progress.
- Contract packages to address hazardous tree removal and scrubbing works East of Cann River are progressing. General track clearing and maintenance outside of these works are continuing to be done by local crews.
- The Roads and Fixed Assets Project has ten engineering and crossing design packages expected to be completed between October 2022 and March 2023 for drainage lines and crossings in the following area's – Noorinbee (Horseshoe Rd), Drummer Creek (Bicentennial Rd No's 1, 2, 3, 4 & 5), Pyramid Ck Rd, Quartz Ridge Rd, Quartz Reef Rd, and Koola Creek Rd.

➤ **Completed Works and Updates-**

*Resurfacing works for Reedbed Road and repairs to Buldah Trail are now completed.

*Old Coast Rd – Eastern section.

Local contractor W & J Fenner Pty Ltd, has achieved good progress with 70% completion of landscape protection break works. There is a current wet weather pause as drier conditions are needed for stump removal and final earthworks. Re-commencement of these works planned for closer to Christmas.

*Choof Choof – Tamboon - New fishing platforms and improved campground access is now completed.

Choof Choof - Tamboon



Drummer Rainforest Walk -Improvements



Snowy District Community Newsletter - # 2

Orbost Work Centre

- Contracts have been awarded to repair major land slip damage on Errinundra and Sardine Creek Roads. Works will commence when environmental conditions are suitable.
- Emergency stabilisation works on Greens Road are being undertaken to repair the land slip.
- Engineering designs have been sourced for crossing repairs at Wehner Track on Wibenduck Creek and going out to contract soon.
- Erosion control and pipe installation is near completion on Monument Track, Sandy Point Track and Partellis Xing.
- Walking tracks have been extended adding a further 1.3 km's of track at the Marlo State Forest. (Healeys Road to Mots Beach Avenue and Ricardo Drive, including the eastern end along Mots Beach Avenue, William Hunter Drive, Curlip Drive and sections along the powerline easement.) There is a 300 m section of track to link up the powerline easement track to the Snowy River Coastal Walk with works scheduled when ground conditions are drier.
- Woods Point Campground update - Works include improved access with grading and re-sheeting works on the access road to the campground with further additions of 2 new double toilets, new picnic tables and firepits and levelled campsites. Arborist works are proceeding as planned. **PLEASE NOTE** - Woods Point Campground is currently **CLOSED** due to redevelopment, with a revised reopening now scheduled in December 2022.
- **Completed Works and Updates-**
 - * Repairs to Gravel Road and Buldah Trail have been completed.
 - * 20 km's of Coast Range Rd repairs are delayed by weather conditions.

- * Bridges have been replaced on Morrisons Tk, Kermond Rd, Paradise Ridge and Iron Chimney Tk.

Woods Point – Redevelopment



Snowy District Community Newsletter - # 2

Road Closures and Updates

- Please be advised that Jack Road is currently closed for slip repair works. Estimated date for reopening is 28th October.
- Bete Belong Creek Track is also closed due to wet conditions, Current plans are it will be open by Christmas weather dependant.
- Resurfacing works on Storers Track and Rocky River Road with Bonang Road to Brodribb River Crossing have been completed but is too wet to open.

Forest Management News

- Invasive species and weed control programs have been implemented through the DELWP-Moogji Service Agreement, with coordinated works funded via the Good Neighbour Program and Flood Recovery across the Snowy District.
- Re-treatment of blackberry, orange firethorn, boxthorn and privet infestations on the Deddick River at Tubbut. Revegetation components have also commenced at these sites.
- Re-treatment of emergent English Holly, English Broom and English Ivy at Bonang. Revegetation components have also commenced at these sites. Blackberry control along the private interface has also commenced at Bonang.
- Continuing with re-treatment of periwinkle around Woods Point Campground and Symplocos Thwaitesii (Buff Hazelwood) protection sites.
- Commencement of flood recovery weed treatment at Cann River, focussing on emergent Wandering Tradescantia and Cape Ivy.

Victoria's Great Outdoors Program

- Redevelopment works are continuing at Woods Point Campground.

- **PLEASE NOTE:** Woods Point Campground is currently **CLOSED** due to the redevelopment works occurring with a revised reopening now scheduled for 16th December 2022. (Weather dependent)
- Long Point, Sandy Point and Hectors Campgrounds are now open after redevelopment. – 4WD access only. (**Please note** - Campgrounds have been impacted by recent flooding events)
- PLEASE help protect our campgrounds, by staying on provided tracks, using allocated fire pits and bbq's, removing your rubbish and maintaining the sites for the enjoyment of yourselves and others.

Natural Environment Program

- A project commenced in early October with Cann Galaxias conservation works within the Lockup Creek system, north of Cann River. The project is managed by ARI (Arthur Rylah Institute).
There is also ARI staff surveying the Watsons Tree Frog.
Updates of these projects will be provided in following newsletters.

Additional News and Information

- PROJECT FIRE FIGHTER positions with Forest Fire Management Victoria (DELWP and Parks Victoria) have now been filled with 40 'summer crew' in positions across the District. Posting numbers are: Bendoc - 11, Cann River - 12, Mallacoota - 2 and Orbost - 13. The 40 positions are made up of some returning crew members along with new 'summer crew' recruits. 11 new recruits are from our local communities across the District. 6 of these recruits are female filled positions. A designated Aboriginal position has also been filled as well as a Fire Support Officer, with both based in Orbost.
- Extensive training for the PFF's started on the 21st October which includes General Fire Fighter, Chainsaw, 4WD and a range of other accreditations.

Snowy District Community Newsletter - # 2

- Recently held was our Forest Fire Management pre-season briefing with crew and staff from DELWP and Parks Victoria attending from Bendoc, Cann River, Mallacoota and Orbost.
- School Based Traineeship – 4 Year 11 students from Orbost Secondary College are currently studying a Certificate 11 in Conservation and Ecosystem Management and gain field-based work experience once a week with DELWP hosting 2 students and Envite Environmental hosting 2 students. The students have been working within DELWP - Forest Management, Southern Ark and Victoria's Great Outdoors
WELL DONE - Three students from this work experience opportunity are successful PFF recruits this season.
- Domestic Firewood collection dates: 1st September to 30th November. Contact your local DELWP office or www.ffm.vic.gov.au for collection areas.
- THANKYOU to **EVERYONE** for your outstanding work efforts and support with Recovery efforts across the Snowy District.

School Based Trainee students with Orbost Crew and WestVic Staffing Solutions Officer



- **Community Engagement**
- District staff recently attended the Mallacoota Fuel Management Working Group meeting where our Bushfire Risk Officer presented information on the Gippsland risk profile and Bushfire Management Strategy. (Additional information provided in Fuel Management section.) Discussions also included sustainable management for Mallacoota and District area.
- Several staff recently attended the Bemm River Progress & Improvement Association Inc meeting and luncheon to gather with community and other agencies to discuss issues, solutions, and accomplishments. The Progress Association thanked sponsors and supporters and shared achievements. Well done to the Bemm River Community.
- Staff from the District attended the recent Errinundra to Snowy Community Recovery Committee meeting at Bonang Hall to discuss Victoria's Great Outdoors and to provide information and support to communities in the area.
- Added attendance, participation and support includes:
Orbost and Errinundra to Snowy Districts Agency Recovery Network,
Orbost District Community Recovery Transition Committee,
Orbost and District Fuel Management Working group,
Cann Valley Emergency Agency Network,
Mallacoota District Recovery Management Team,
Gippsland Self-Determination Engagement Working Group,
Orbost Secondary College – Broadening Horizons Program
- Involvement in upcoming Community events –
 - Orbost District Fire Ready Expo Dec 3rd 2022
 - Orbost Christmas Eve Festival 2022
- Community contact for East Gippsland Forest Fire Management Victoria – Email eastgippsland.community@delwp.vic.gov.au or Telephone – Orbost 51611222

Snowy District Community Newsletter - # 2

Joint Fuel Management Plan (JFMP)-

The Snowy District Fuel Management Team has been busy planning the 2022-2023 JFMP cycle. The Joint Fuel Management Program is a state-wide program that manages fuel on public and private land. The program integrates a risk-focused bushfire management approach. Forest Fire Management Victoria (FFMVic) and Country Fire Authority (CFA) commits to working as one. The Joint Fuel Management Program (JFMP) is updated each year with the latest information, and built on the latest long term [Bushfire Management Strategies](#). Each region has provided maps and plans that explain how long-term strategic planning is guiding the development of the program. Each map and plan show projected residual risk reduction and ecological outcomes over the next three years.

- For details of fire operations activities in each DELWP or CFA district, including burn locations, use our [interactive map](#) or download the documents. All Joint Fuel Management Program maps cover 2021/22-2023/24. The program is designed to be flexible, allowing the timing of proposed activities over the three-year period to change in response to weather and other conditions. This means activities such as burns may be carried out in a different year than indicated in the maps and plans. Fuel management activities include planned burns and mechanical works such as slashing, mowing and clearing works, creating, and maintaining fuel breaks. We welcome your comments all year round and we encourage you to have input into all parts of the strategic and operational planning process. Please contact your local [DELWP office](#), [Parks Victoria](#) or [CFA](#). Please use this link for further information [Joint Fuel Management Program](#)

Snowy District Planned Burns

- Planned burning will be undertaken within the Orbost and Bendoc Work Centre area when weather conditions are suitable. (October 2022 – April 2023)
 - Newmerella - Joiners Road.
 - Marlo – Bushland East
 - Marlo – Powerlines Track.
 - Bendoc – Clarkeville Road

Further Information on Fuel Management

For information on the science behind bushfire fuel management and risk reduction, and the Gippsland Bushfire Management Strategy 2020, see [Safer Together](#)

For maps and information on all planned bushfire fuel reduction activities over the next three years, see [Joint Fuel Management Program](#)

For notifications of upcoming planned burns, see [Planned Burns Victoria](#)

Gippsland risk profile

<https://www.safertogether.vic.gov.au/regions/gippsland-region>

For information on Gippsland bushfire community recovery, fire history, science and more, as well as a place to tell your story, see

<https://www.communitybushfireconnection.com.au/>

Department of Environment, Land, Water and Planning (DELWP) www.delwp.vic.gov.au

PHOTO BOARD

Rich River Timber Workers Hut



Snowy District Community Newsletter - # 2

Sandy Point Campgrounds - before improvements



and after improvements



- after improvements



Long Point Campground - before improvements



Slip repair on Jack Road -Recovery works



Marlo State Forest Walking Track – Non burn fuel treatment – before improvements



Snowy District Community Newsletter - # 2

- after improvements



Good Neighbour Program signage



More to Explore Information

A promotional graphic for the 'More to Explore' app. It features a large background image of two people standing on a hill overlooking a lake. Overlaid on this are three smaller images: a person walking on a trail, a koala in a tree, and a person mountain biking. At the bottom, there is a smartphone displaying the app's interface, which shows a map with various activity icons. Text on the graphic includes:
More to Explore App
Experience Victoria's state forests
More to Explore lets you experience everything that Victoria's three million hectares of state forests have to offer. You can search interactive maps to find out where you can go walking, camping, fishing, four-wheel driving, canoeing, trail bike riding, and more. Search by activity and level of difficulty and let the app help you navigate while you're exploring.
There's never been a better time to go bush and explore our state forests.
More to Explore is available for download from Google Play and App store.
At the bottom left, it says 'Environment, Land, Water and Planning'. At the bottom right, it says 'FOREST FIRE MANAGEMENT VICTORIA' with a logo.

Slip repair on Jack Road -Recovery works



Snowy District Community Newsletter - # 2

Snowy District DELWP Office Locations:

Bendoc – 9 – 11 Nicholl Street Bendoc 3888

Phone 02 6459 0500

This Office is closed to the Public

Monday to Friday 8.30 am to 4.30 pm

Please call ahead if planning to visit the Office. (By appointment only)

No Services available

Information can be provided for – Forest Fire Management, registration to hunt pest animals on Crown land, State Forest Activities and Camping and Seasonal track closures.

Cann River – 92 Princes Highway Cann River 3890

Phone 03 5158 2100

This Office is closed to the Public

Monday to Friday 8.30 am to 4.30 pm

Please call ahead if planning to visit the Office. (By appointment only)

No Services available

Information can be provided for– Domestic firewood collection Maps/Information, Seasonal track Closures, State Forest Activities and Camping, Deer Hunting Maps, Wildlife queries, Forest Fire Management queries and Information.

Orbost – 171 – 173 Nicholson Street, Orbost 3888

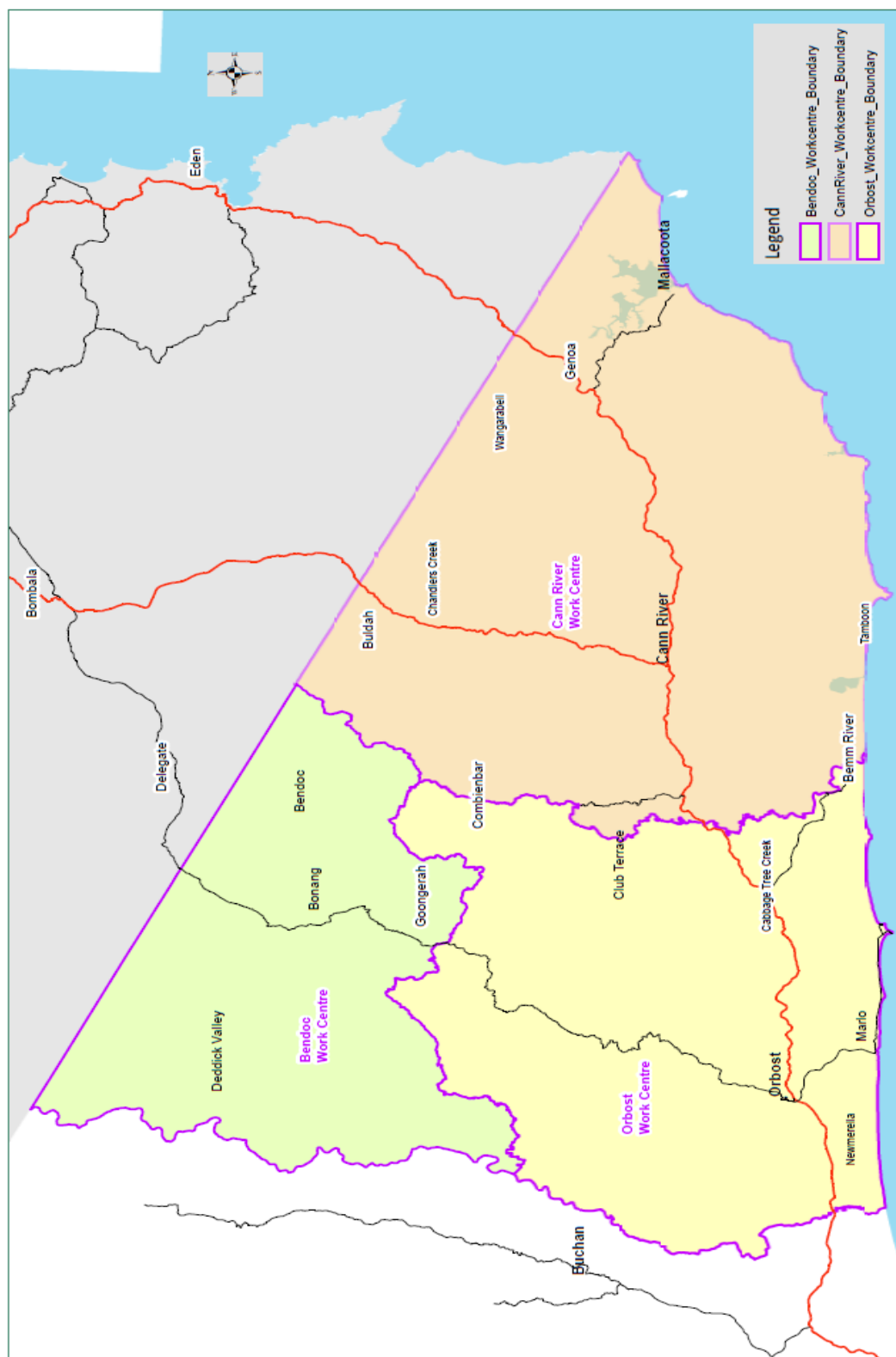
Phone 03 5161 1222

Tuesday to Friday. Counter service available 9 am to 4.00 pm – (Office Closed on **Mondays**)

No Services available

Information can be provided for– Domestic firewood collection Maps/Information, Seasonal track Closures, State Forest Activities and Camping, Wildlife queries, Forest Fire Management queries and information, Information relating to wildlife licence. Registration of interest to hunt pest animals on Crown land.

Snowy Land and Fire District

[illegible]

Forest Fire Management Victoria



UNITED KINGDOM

Environment,
and Water
and Planning

1 June 2022
 Document Name: Services Map.mxd
 Document Path: C:\Users\jcarroll\AppData\Local\Microsoft\Windows\Temporary Internet Files\Content.IE5\B7666666\Documents\1 June 2022