

# **MADRA working group**

## **Mallacoota Bushfire Fuel Management**

### **Recommendations June 2021**



*The Mallacoota Bushfire Fuel Management working group was initially convened in 2019 as The Mallacoota Township Bushfire Fuel Management. In May 2020, after the Black Summer fires, MADRA (Mallacoota and Districts Recovery Association) was formed and we were formally accepted as a working group under MADRA.*

The group consists of active representation from the local community, DELWP, FFM Vic, CFA, East Gippsland Shire and Bushfire Recovery Victoria. It has met regularly throughout the last two years.

Our aim is to develop an agreed long-term plan for sensitively reducing bushfire fuel for the protection of Mallacoota township. The plan is not set in concrete and will evolve over time.

# Terms of Reference

## Purpose

The purpose of the Working Group is to:

- Develop a collaborative, ongoing bushfire fuel management plan for the protection of the township of Mallacoota
- Develop a 3 year, rolling, action plan
- Oversee the implementation of the fuel management action plan
- Review the fuel management action plan annually
- Revisit the overall fuel management plan every five years
- Communicate the plan to land and fire management agencies and to the members of Mallacoota community

The purpose is:

- **not** to advise or comment on individual property plans
- **not** to implement actions during bushfire events

## Membership

Membership of the Working Group will include representative/s of :

- Mallacoota community groups and individuals.
- Mallacoota Fire Brigade
- CFA Region
- Parks Victoria
- Department of Environment Land, Water and Planning
- East Gippsland Shire Council
- Additional members may be invited or seconded as required

## Meetings

- Meetings will be held as required to develop and review the plan
- A meeting will be held to revisit the annual Action Plan in May each year

## Administration

- The Working Group will appoint a suitable person to provide administrative support to the Working Group.
- Agendas and notes will be provided for each meeting

## Communication

- Communication within the Working Group will be via email
- Communication with Mallacoota community members will be via:
  - Established community groups and networks
  - Small community meetings as required or appropriate
  - Community radio
  - Community noticeboard
  - The *Mallacoota Mouth*

# Overview

In preparing our plans the aim was to balance risks to:

- Life and property
- Biodiversity
- Amenity

Each of the four plans have been prepared from:

- General vegetation description
- Fuel hazard
- Slope
- Existing tracks and internal boundaries
- Values
- Risk assessment

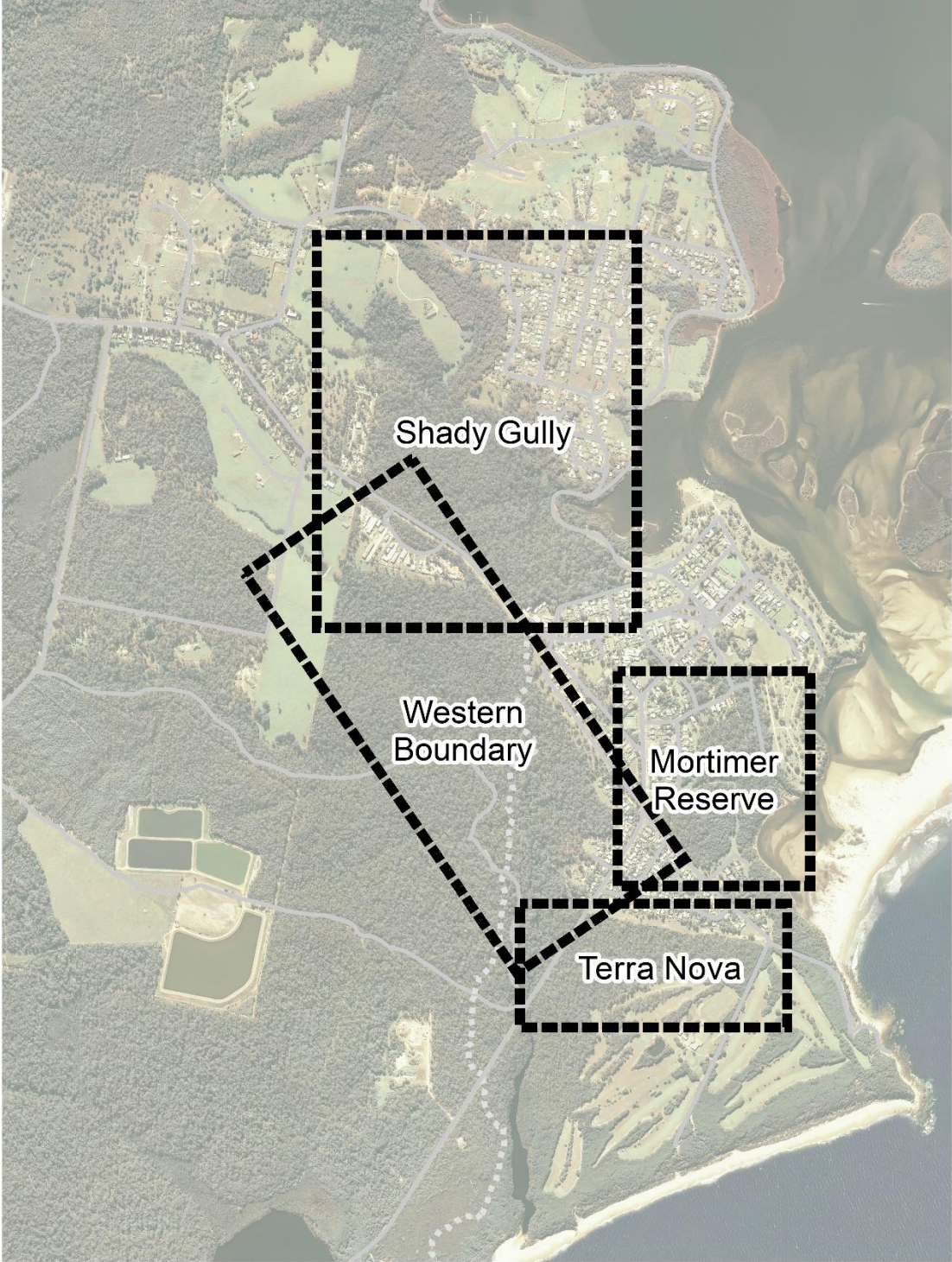
As noted, the group is formed from agencies and community volunteers. All recommendations provided in the following maps are the result of knowledge sharing, understanding appropriate legislation and many hours of discussion and compromise. Formal community consultation included a workshop held on 28 April 2021 , which was attended by over 60 interested community members.

The following maps include:

- A location map showing the areas selected for fuel management planning (Shady Gully, Western Boundary, Mortimer Reserve and Terra Nova)
- Fuel management recommendations for selected areas in order from north to south.



LOCATION MAP



Fuel Management Plan location (indicative only)

— Road/Track  
- - - Walk



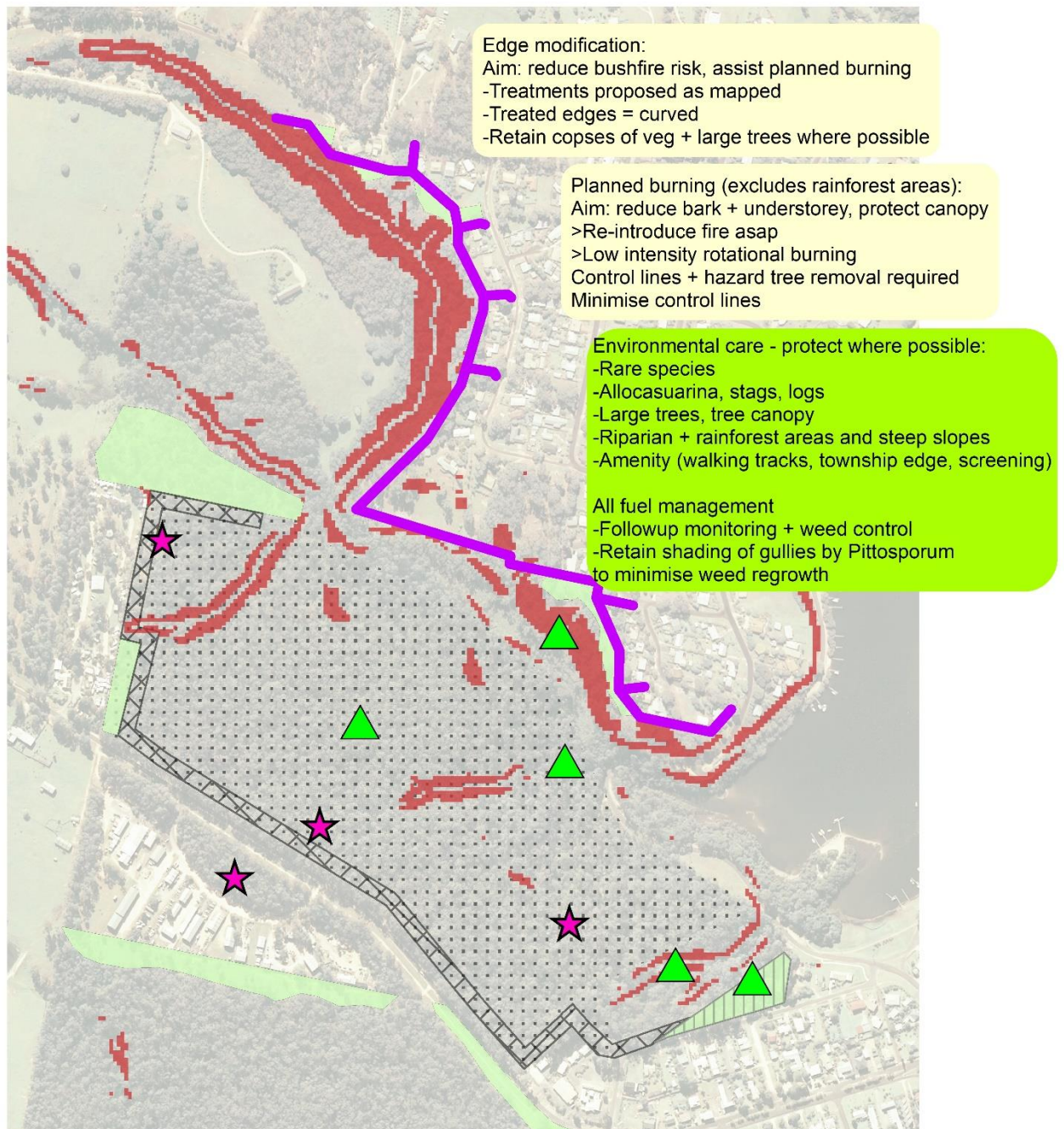
Metres  
0 200 400

File: FuelMgtWkGroup\_CommunityConsultOverview4Recommendations2021  
Image (2013) and data MGA Zone 55: Government of Victoria, Geoscience Australia, obliqua pty ltd, MBFMWG  
Map drawn for Mallacoota Bushfire Fuel Management Working Group by obliqua pty ltd  
All features and dimensions shown on this map are approximate and must be verified on site. The Mallacoota Bushfire Fuel Management Working Group and obliqua pty ltd, its directors, employees and contractors accept no liability for loss or damage resulting from use of this map whether due to unintended inaccuracy, error or omission or any other cause.

**obliqua pty ltd**  
sustainable land and bushfire management  
Helen Bull | 0400 310 188 | [h.bull@bigpond.com](mailto:h.bull@bigpond.com)  
PO Box 440 Mallacoota Victoria Australia  
[www.obliqua.com.au](http://www.obliqua.com.au)  
ABN 33 140 318 627 | ACN 140 318 627



## SHADY GULLY



File: FuelMgtWkGroup\_ShadyGully\_4\_FMP\_210511\_B+W\_Recommendations2021  
Image (2013) and data MGA Zone 55: Government of Victoria, Geoscience Australia, obliqua pty ltd, MBFMWG  
Map drawn for Mallacoota Bushfire Fuel Management Working Group by obliqua pty ltd  
All features and dimensions shown on this map are approximate and must be verified on site. The Mallacoota Bushfire Fuel Management Working Group and obliqua pty ltd, its directors, employees and contractors accept no liability for loss or damage resulting from use of this map whether due to unintended inaccuracy, error or omission or any other cause.



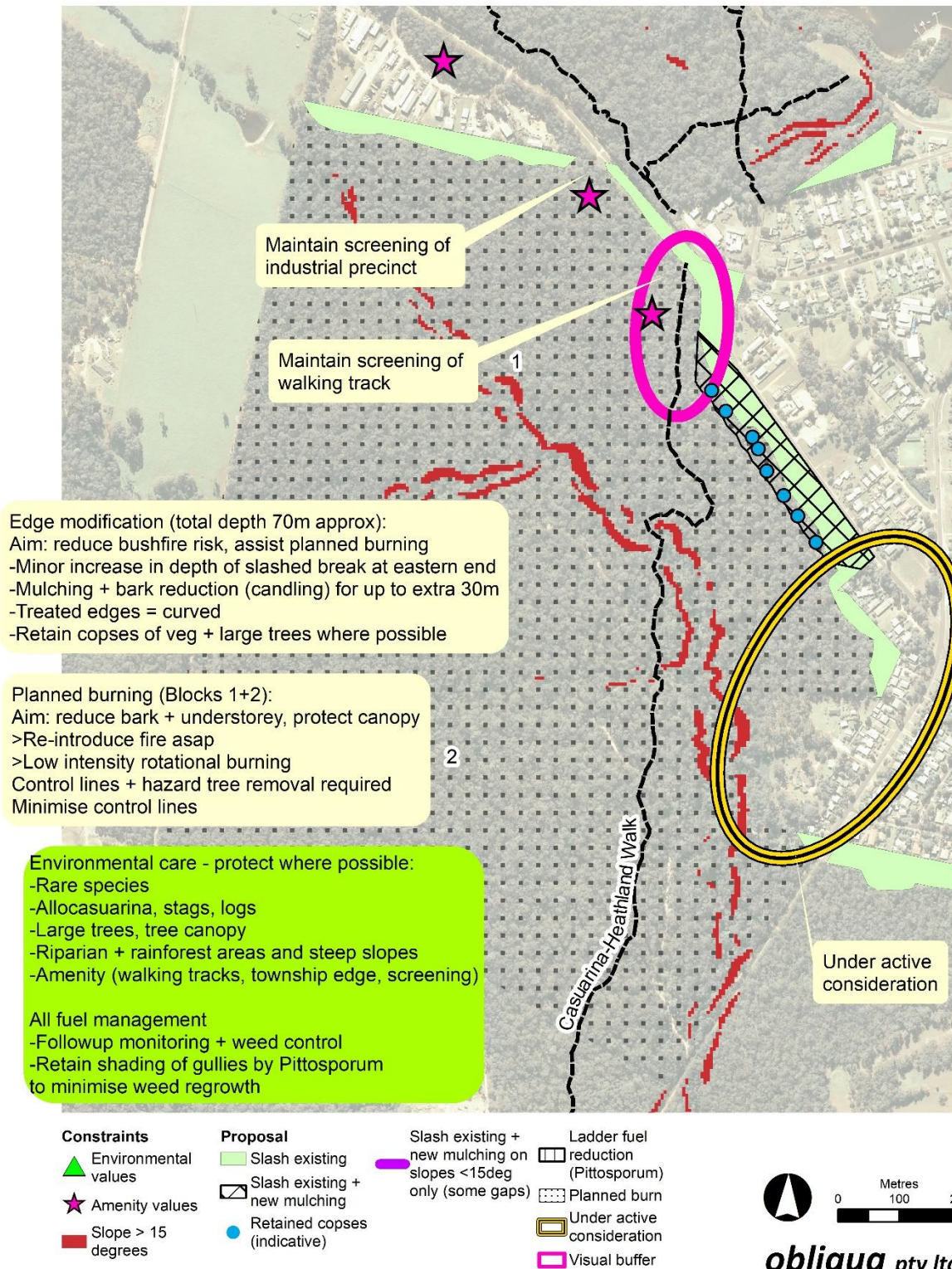
0 100 200 Metres

**obliqua pty ltd**

sustainable land and bushfire management  
Helen Bull | 0400 310 188 | [h.bull@bigpond.com](mailto:h.bull@bigpond.com)  
PO Box 440 Mallacoota Victoria Australia  
[www.obliqua.com.au](http://www.obliqua.com.au)  
ABN 33 140 318 627 | ACN 140 318 627



## WESTERN BOUNDARY



File: FuelMgtWkGroup\_WestBreak\_4\_FMP\_210511\_B+W\_Recommendations2021  
Image (2013) and data MGA Zone 55: Government of Victoria, Geoscience Australia, obliqua pty ltd, MBFMWG  
Map drawn for Mallacoota Bushfire Fuel Management Working Group by obliqua pty ltd  
All features and dimensions shown on this map are approximate and must be verified on site. The Mallacoota Bushfire Fuel Management Working Group and obliqua pty ltd, its directors, employees and contractors accept no liability for loss or damage resulting from use of this map whether due to unintended inaccuracy, error or omission or any other cause.



0 100 200 Metres

**obliqua pty ltd**

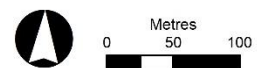
sustainable land and bushfire management  
Helen Bull | 0400 310 188 | [h.bull@bigpond.com](mailto:h.bull@bigpond.com)  
PO Box 440 Mallacoota Victoria Australia  
[www.obliqua.com.au](http://www.obliqua.com.au)  
ABN 33 140 318 627 | ACN 140 318 627



## MORTIMER RESERVE



Constraints	Proposal	Slash existing + new mulching on slopes <15deg only (some gaps)	Ladder fuel reduction (Pittosporum)
▲ Environmental values	■ Slash existing	■ Slash existing + new mulching	■ Planned burn
★ Amenity values	● Retained copses (indicative)		■ Under active consideration
■ Slope > 15 degrees			■ Visual buffer



**obliqua pty ltd**

sustainable land and bushfire management  
Helen Bull | 0400 310 188 | [h.bull@bigpond.com](mailto:h.bull@bigpond.com)  
PO Box 440 Mallacoota Victoria Australia  
[www.obliqua.com.au](http://www.obliqua.com.au)  
ABN 33 140 318 627 | ACN 140 318 627

File: FuelMgtWkGroup\_Mortimer\_4\_FMP\_210511\_B+W\_Recommendations2021  
Image (2013) and data MGA Zone 55: Government of Victoria, Geoscience Australia, obliqua pty ltd, MBFMWG  
Map drawn for Mallacoota Bushfire Fuel Management Working Group by obliqua pty ltd  
All features and dimensions shown on this map are approximate and must be verified on site. The Mallacoota Bushfire Fuel Management Working Group and obliqua pty ltd, its directors, employees and contractors accept no liability for loss or damage resulting from use of this map whether due to unintended inaccuracy, error or omission or any other cause.



Working Group proposals 23 April 2021 as presented for community consultation 28 April 2021

## TERRA NOVA

